

# **Key Projects for Cooperation & Exchange of Shaanxi Automobile Industrial Chain**

**Shaanxi Provincial Development and Reform Commission**

**2021.10**





## Contents

## Contents

Fuping County Vehicle Industry Base Project of Weinan City.....	2
Automobile Components Industrial Park Project of Shoushan Town.....	3
Shaanxi Qinxing New Energy Automobile Components Base Project .....	4
Construction Project of Automobile Components Xianyang Base.....	5
Construction Project of Automobile Lightweight Materials Production Line.....	6
Special Automotive Bearing Production Project.....	7
Motor Driving Device Project of New Energy Automobiles.....	8
High-end Equipment and Automobile Manufacturing Project.....	9
Xingping Military and Civil Integration Industrial Demonstration Base Project...10	
Automobile Production and Matched Components Industrial Park Project.....	11
High-end Intelligent Manufacturing Project of Automobile Components.....	12
Research & Development and Production Project of Automobile Components...13	
Automobile Nave Production Project.....	14
Intelligent Equipment Production Line Project for Automobile Components.....	15
Construction Project of Urban Parking Lot in Xianyang City.....	16
Construction Project of New Energy Automobile Charging Facilities.....	17
New Energy Auto Components Industrial Park Project of Weinan Economic Technologies Development Zone.....	18
Basic Automobile Charging Facilities Project of Weinan Economic Technologies Development Zone.....	19
Construction Project of Agricultural Machinery Market of Baishui County.....	20
3000 t/y Poly- p- Phenylene Terephthamide (PPTA) Fiber Project of Yushen Industrial Zone.....	21

Deep Processing Project of 200,000 t/y Aluminum-Magnesium Alloy in Fugu County.....	22
Deep Processing Project of Magnesium Alloy Automobile Components in Yulin High-Tech Industries Development Zone.....	23
2000 Tons of Special Steel Production Line Project.....	24
200,000 t/y Pinion Steel Production Project.....	25
Automobile Components Industrialization Project.....	26
Electric Vehicles Production Project.....	27
Hybrid Electric Vehicle Battery Pack Project with Annual Output of One Million Sets.....	28
Production Line Project with Annual Output of 4500 Sets of Automobile Precision Mold.....	29
MEMS Sensor Manufacturing and Sensor Incubation Industrial Park with Annual Output of 2 Million Pieces a Year.....	30
500,000 PCS/Year Automobile Components Project.....	31
Electric Vehicle Charging Equipment Construction Project of Zhenping County...32	
Large Power Charging Pillar Production Project for New Energy Auto of Shiquan County.....	33
Construction Project of Scrapped Motor Vehicle Recovery and Disassembly Production Line.....	34
Automobile Matched Industrial Park Project.....	35
Digital Industrial Enclave Park Project of Tongchuan New District.....	36

## I. Project Name

# Fuping County Vehicle Industry Base Project of Weinan City



## II. Project Implementation Agency

The People's Government of Fuping County

## III. Project Description

Having a covered area of about 2,000 mu and relying on the demand of auto spare parts and accessories of auto manufacturers such as Shaanxi Automobile Group, BYD, Fast Auto Group, Geely and Skywell in the surrounding area of the park, the project is planned to develop the R & D and manufacturing of new energy commercial vehicles, core components and supporting products, as well as the related science and technology industries such as cloud computing, big data, electronic information and artificial intelligence, and the production service industry. It is to introduce high-end standards and influential core components enterprises in new energy areas to build the R & D and production base for new energy passenger cars, new energy cars, power battery groups and relevant industrial chain.

## IV. Total Investment and Way of Cooperation

Total investment of the project is RMB 8 billion Yuan. An enterprise's sole investment or the cooperation between the government department and the enterprises is acceptable.

## V. Anticipation of Market and Analysis of Investment Return

It will create job positions for over 800 persons and build a base for research development, production and matched industries of automobile industry.

## VI. Contact Information

**Contact Person:** Zhao Qian

**Telephone:** 13571330913

**Fax:** 0913-8206256

**Address:** the 12th Floor, Citizen Convenience Service Center, Lianhu Avenue, Fuping County

**Postal Code:** 711700

**E-mail:** fpxzsj@163.com



## I. Project Name

# Automobile Components Industrial Park Project of Shoushan Town



## II. Project Implementation Agency

Meixian County Investment Promotion Bureau

## III. Project Description

The project is planned to build a new energy automobile production line and build a manufacturing center and research and development center with perfect facilities, sound functions, integrating in the production and sales service of automobile components, electric appliance, interiors, motors and automobile components.

## IV. Total Investment and Way of Cooperation

Total investment of the project is RMB 5 billion Yuan. Way of cooperation: joint venture or sole investment.

## V. Anticipation of Market and Analysis of Investment Return

After the project is completed, it will realize production value of RMB 10 billion Yuan and profit of RMB 1.5 billion Yuan. The investment recovery period of the project is 7 years.

## VI. Contact Information

**Contact Person:** Chen Tao

**Telephone:** 0917-5548001

**Address:** No. 146, Pingyang Street, Meixian County

**E-mail:** mxzsb@5547611





## I. Project Name

# Shaanxi Qinxing New Energy Automobile Components Base Project



## II. Project Implementation Agency

Xianyang Scientific Technological Industrial Park

## III. Project Description

The project has a total covered area of 1241.4 mu and a total construction area of 436045 m<sup>2</sup>. It is mainly to build a press room, a welding shop, paint shop, Pack Workshop, electric machinery and electric control workshop, electric machinery controller workshop, office buildings and matched facilities.

## IV. Total Investment and Way of Cooperation

Total investment: RMB 4470 million Yuan. Way of cooperation: joint venture or cooperation.

## V. Anticipation of Market and Analysis of Investment Return

After the project is completed, it will further expand the production capacity, increase product variety and improve product market occupation rate.

## VI. Contact Information

**Contact Person:** Zhang Yufa

**Telephone:** 15861861802



## I. Project Name

# Construction Project of Automobile Components Xianyang Base



## II. Project Implementation Agency

Qindu District Investment Promotion Bureau

## III. Project Description

Total investment of the Construction Project of Automobile Components Xianyang Base is RMB 1.112 billion Yuan. The project, having a covered area of 300 mu in Xianyang Equipment Manufacturing Industrial Park, lies at the south of Chengguoqu Road, North of Wenxing Road, the West of the First Hanling Road. It is mainly to build production workshops, efficacy workshops, commissioning workshops, raw materials warehouses, research and development buildings and other supporting facilities.

## IV. Total Investment and Way of Cooperation

Total investment of the project is RMB 1.112 billion Yuan, sole investment or joint venture is adopted.

## V. Anticipation of Market and Analysis of Investment Return

The project has broad market prospect, rational project site. It is a project worthy of recommendation. After the project is completed and put into operation, it is estimated that annual sales income will be RMB 1.4 billion Yuan, profit and tax will be RMB 200 million Yuan. It can provide jobs for over 500 persons.

## VI. Contact Information

**Contact Person:** Li Hangyu

**Telephone:** 029-33229145

**Fax:** 029-33229144

**Address:** Office No. 912, the People's Government of Qindu District

**Postal Code:** 712000

**E-mail:** qdzhshb@sina.com





## I. Project Name

# Construction Project of Automobile Lightweight Materials Production Line



## II. Project Implementation Agency

Qindu District Investment Promotion Bureau

## III. Project Description

Total investment of the Construction Project of Automobile Components Xianyang Base is RMB 1.07 billion Yuan. The project, having a covered area of 200 mu in Xianyang Equipment Manufacturing Industrial Park, lies at the south of Chengguoqu Road, North of Wenxing Road, the West of the First Hanling Road. It is mainly to build production workshops, comprehensive office buildings, research and development buildings, employee's dormitory and other supporting facilities.

## IV. Total Investment and Way of Cooperation

Total investment of the Construction Project of Automobile Components Xianyang Base is RMB 1.07 billion Yuan. Sole investment or joint venture is adopted.

## V. Anticipation of Market and Analysis of Investment Return

The project has broad market prospect, rational project site. It is a project worthy of recommendation. After the project is completed and put into operation, it is estimated that annual sales income will be RMB one billion Yuan, profit and tax will be RMB 90 million Yuan. It can provide jobs for over 300 persons.

## VI. Contact Information

**Contact Person:** Li Hangyu

**Telephone:** 029-33229145

**Fax:** 029-33229144

**Address:** Office No. 912, the People's Government of Qindu District

**Postal Code:** 712000

**E-mail:** qdzhshb@sina.com



## I. Project Name

# Special Automotive Bearing Production Project



## II. Project Implementation Agency

Qindu District Investment Promotion Bureau

## III. Project Description

Total investment of the Special Automotive Bearing Production Project is RMB 260 billion Yuan. The project, having a covered area of 80 mu in Xianyang Equipment Manufacturing Industrial Park, lies at the east of Hancang Road, North of Wenxing Road, South of High Trunk Canal. It is mainly to build production workshops, warehouses, office, employee's dormitory and other supporting facilities.

## IV. Total Investment and Way of Cooperation

Total investment of the Special Automotive Bearing Production Project is RMB 260 million Yuan. Sole investment or joint venture is acceptable.

## V. Anticipation of Market and Analysis of Investment Return

The Automotive Bearing Production Project has broad market prospect, rational project site. It is a project worthy of recommendation. After the project is completed and put into operation, it is estimated that annual sales income will be RMB 300 million Yuan, profit and tax will be RMB 28 million Yuan. It can provide jobs for over 150 persons.

## VI. Contact Information

**Contact Person:** Li Hangyu

**Telephone:** 029-33229145

**Fax:** 029-33229144

**Address:** Office No. 912, the People's Government of Qindu District

**Postal Code:** 712000

**E-mail:** qdzhshb@sina.com



## I. Project Name

# Motor Driving Device Project of New Energy Automobiles



## II. Project Implementation Agency

Qindu District Investment Promotion Bureau

## III. Project Description

Total investment of the Motor Driving Device Project of New Energy Automobiles is RMB 170 million Yuan. The project, having a covered area of 50 mu in Qindu District of Xianyang City, lies at the South of Wenxing Road, North of Xingye Road, West of Hancang Road and East of Hanling Road. It is mainly to build production workshops, warehouses, office buildings, employee's dormitory buildings and other supporting facilities.

## IV. Total Investment and Way of Cooperation

Total investment of the project is RMB 170 million Yuan. Sole investment or joint venture is acceptable.

## V. Anticipation of Market and Analysis of Investment Return

The project has broad market prospect, rational project site. It is a project worthy of recommendation. After the project is completed and put into operation, it is estimated that annual sale income will be RMB 200 million Yuan, profit and tax RMB 18 million Yuan. It can provide jobs for over 100 persons.

## VI. Contact Information

**Contact Person:** Li Hangyu

**Telephone:** 029-33229145

**Fax:** 029-33229144

**Address:** Office No. 912, the People's Government of Qindu District

**Postal Code:** 712000

**E-mail:** qdzhshb@sina.com



## I. Project Name

# High-end Equipment and Automobile Manufacturing Project



## II. Project Implementation Agency

Xingping Investment Promotion Bureau

## III. Project Description

Relying on 3000 mu of reserved industrial land in the key town Xiwu Town at provincial level, it is mainly to introduce manufacturers involving rail transit equipment, research and development and new materials, smart equipment, new energy vehicles, passenger vehicle, entire business vehicles to reside in the reserved industrial land.

## IV. Total Investment and Way of Cooperation

Total investment of the project is RMB 10 billion Yuan. Sole investment or joint venture is acceptable.

## V. Anticipation of Market and Analysis of Investment Return

After the project is completed, it will realize industrial production value of over RMB 8 billion Yuan and profit and tax of RMB 1.5 billion Yuan. It can provide jobs for 1000 persons.

## VI. Contact Information

**Contact Person:** Wang Min

**Telephone:** 13892019696

**Fax:** 029-38732836

**Address:** Xingping Investment Promotion Bureau



## I. Project Name

# Xingping Military and Civil Integration Industrial Demonstration Base Project



## II. Project Implementation Agency

Bureau of Industry and Information Technology of Xingping

## III. Project Description

Based on the advanced Sci-Tech Platform of CSIC No. 12 Research Institute and AVIC Xi'an Aviation Brake Technology Co., Ltd., and the incubator function of National Military& Civilian Integrated Demonstration Enterprise, AVIC Shaanxi Aero Electric Co., Ltd. and CSIC No. 12 Research Institute, it focuses on developing seven industries, including aviation braking, vehicle brake, industrial power supply, shipping power, backup power supply, weapon materials, wind power assembly, weapon shell, and is aimed to create Shaanxi and even national-level military& civilian integrated product demonstration base.

## IV. Total Investment and Way of Cooperation

Total investment is RMB 5000 million Yuan. Joint venture, cooperation or PPP is acceptable

## V. Anticipation of Market and Analysis of Investment Return

It is expected to form four industrial clusters led by Shaanxi Diesel Engine Heavy Industry. Ltd., AVIC Shaanxi Aero Electric Co., Ltd., AVIC Xi'an Aviation Brake Technology Co., Ltd., CSIC No. 12 Research Institute, and followed by 100 SMEs in 2023, aiming to realize production value of RMB 20 billion Yuan, and provide jobs for 2,000 persons.

## VI. Contact Information

**Contact Person:** Shi Chaoyang

**Telephone:** 13891038272

**Fax:** 029-38822071

**Address:** Bureau of Industry and Information Technology of Xingping



## I. Project Name

# Automobile Production and Matched Components Industrial Park Project



## II. Project Implementation Agency

The People's Government of Sanyuan County

## III. Project Description

The project, having a covered area of 3000 mu, is planned to build the infrastructure involving sci-tech building, administration building, production workshop, automobile raw materials warehousing workshop, finished vehicle warehouses, components processing workshop, components raw materials warehouse, finished products warehouse, educational training base.

## IV. Total Investment and Way of Cooperation

Total investment: RMB 6 billion Yuan. Way of cooperation: sole investment or cooperation.

## V. Anticipation of Market and Analysis of Investment Return

After the project is completed and put into production, annual sales income will be RMB 10 billion Yuan, tax contribution about RMB one billion Yuan. It can provide jobs for about 5000.

## VI. Contact Information

**Contact Person:** Xu Kai

**Telephone:** 13772550088





## I. Project Name

# High-end Intelligent Manufacturing Project of Automobile Components



## II. Project Implementation Agency

Liquan County Investment Promotion Bureau

## III. Project Description

The project, having a covered area of over 800 mu, is mainly to introduce 1000 sets of international advanced high precision smart forging machines, high-efficient precision CNC machining centers, industrial molds manufacturing equipments from USA, Germany, UK and Japan and etc, it may manufacture the research and development and manufacturing of 100,000 sets of heavy-duty gear boxes and 150,000 pieces of automobile gears.

Total investment of the project is RMB 1500 million Yuan. Sole investment is adopted.

## V. Anticipation of Market and Analysis of Investment Return

After the project meets its production target, it will realize sales income of RMB 2.5 billion Yuan, create 200 jobs and increase tax revenue.

## VI. Contact Information

**Contact Person:** Zhao Ruigang

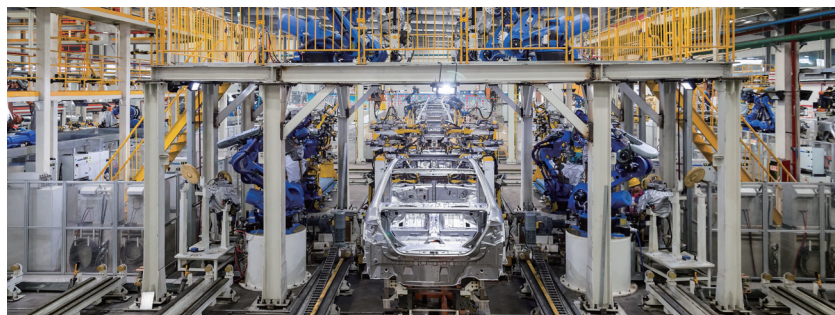
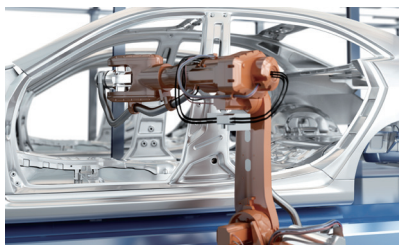
**Telephone:** 029-35618802

**Fax:** 029-35618802

**Address:** Xilan Avenue, Liquan County

**Postal Code:** 713200

**E-mail:** liquanzhaoshang@sina.com



## I. Project Name

# Research & Development and Production Project of Automobile Components



## II. Project Implementation Agency

Qianxian County Investment Promotion Bureau

## III. Project Description

The project, having a covered area of 100 mu and total construction area of 45000m<sup>2</sup>, is located at Qianxian County Industrial Park. The covered area of the building is 32000 m<sup>2</sup>, green space rate is 15.43%, the floor area ratio is 0.92 and the building density is 65.47%. The construction period is one year. Of which, the building area of the comprehensive building is 5000 m<sup>2</sup>, the building area of the production workshop is 27000 m<sup>2</sup>, the attached production workshop is 3000 m<sup>2</sup>, the building area of the warehouse and the infrastructure is 10000 m<sup>2</sup>.

## IV. Total Investment and Way of Cooperation

Total investment of the project is RMB 320 million Yuan. Way of cooperation: sole investment or cooperation

## V. Anticipation of Market and Analysis of Investment Return

After the project is completed, it will realize annual sales income of RMB 600 million Yuan. The comprehensive industrial strength of local area will be enhanced. Annual average sales tax and extra charge is estimated to be RMB 40 million Yuan. It may provide jobs for over 500 persons.

## VI. Contact Information

**Contact Person:** Liu Yongzan

**Telephone:** 029-35533688



## I. Project Name

# Automobile Nave Production Project



## II. Project Implementation Agency

Yongshou County Investment Promotion Bureau

## III. Project Description

The project has a total construction area of 64600 m<sup>2</sup>, 4 steel structural workshops with total construction area of 53890 m<sup>2</sup>, a comprehensive office building with a total construction area of 3150m<sup>2</sup>, an employees' dormitory building with the construction area of 3780 m<sup>2</sup>, research and development building with the total construction area of 3780 m<sup>2</sup>, two full- automatic spray finishing lines, over 20 sets of various testing equipments and related supporting facilities.

## IV. Total Investment and Way of Cooperation

Total investment of the project is RMB 300 million Yuan. Sole investment or cooperation is acceptable.

## V. Anticipation of Market and Analysis of Investment Return

Annual production value will be RMB 480 million Yuan and annual profit will be RMB 70 million Yuan.

## VI. Contact Information

**Contact Person:** Yang Fanghui

**Telephone:** 029-37663768 13319109089

**Fax:** 029-37663768

**Address:** No. 9, Xilan Avenue, Yongshou County, Shaanxi Province

**Postal Code:** 713400

**E-mail:** yongshouzhao Shang@126.com



## I. Project Name

# Intelligent Equipment Production Line Project for Automobile Components



## II. Project Implementation Agency

Yongshou County Investment Promotion Bureau

## III. Project Description

The project, located in Yongshou County Equipment Manufacturing Park, specializes in the automatic production of automobile components. It is planned to build 2 application demonstration production lines of high-pressure oil pump driving unit and nave unit. The production line is equipped with 64 sets of Central China Type-8 top-grade CNC machine tools and 25 sets of Huashu robots

## IV. Total Investment and Way of Cooperation

Total investment of the project is RMB 120 million Yuan. Investment or cooperation is acceptable.

## V. Anticipation of Market and Analysis of Investment Return

After the project is completed, annual production value will be RMB 82.8 million Yuan, profit and tax will be RMB 12 million Yuan.

## VI. Contact Information

**Contact Person:** Yang Fanghui

**Telephone:** 029-37663768 13319109089

**Fax:** 029-37663768

**Address:** No. 9, Xilan Avenue, Yongshou County, Shaanxi Province

**Postal Code:** 713400

**E-mail:** yongshouzhao Shang@126.com





## I. Project Name

# Construction Project of Urban Parking Lot in Xianyang City



## II. Project Implementation Agency

Xianyang Housing and Urban Construction Bureau

## III. Project Description

The project is planned to newly build revolving parking garages and solid garages with 10000 parking positions over the ground and under the ground in the whole city. According to 20% of proportion of the parking positions, the parking positions and charging piles for new energy vehicles are equipped; the parking positions shall not be less than 10000.

## IV. Total Investment and Way of Cooperation

Total investment of the project is RMB 1500 million Yuan. Way of cooperation: sole investment, joint venture or cooperation.

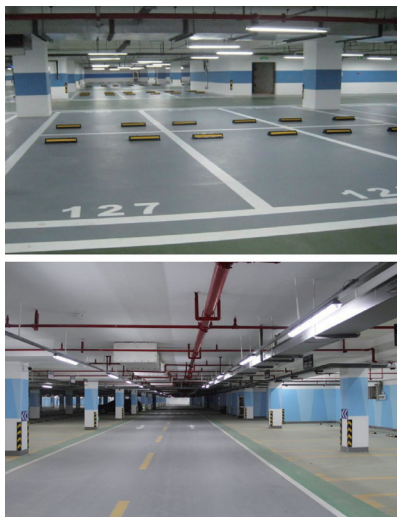
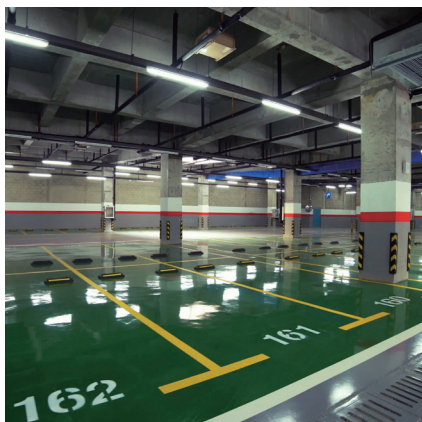
## V. Anticipation of Market and Analysis of Investment Return

After the project is completed and put into operation, it is estimated that annual comprehensive profit will be RMB 200 million Yuan.

## VI. Contact Information

Contact Person: Zhang Yangang

Telephone: 029-33572718



## I. Project Name

# Construction Project of New Energy Automobile Charging Facilities



## II. Project Implementation Agency

Xianyang Housing and Urban Construction Bureau

## III. Project Description

The project is planned to build 10000 distributed public charging piles, 20000 special charging piles, 17 city public charging positions (including 6 small-sized charging positions, 3 standard charging stations, 2 middle-sized charging stations, 5 large -sized charging stations, one extra large-sized charging position; all charging piles are mainly are 7KW AC charging piles and 30KW DC charging piles). It is planned to build 4 bus charging stations and install 120 bus charging piles.

## IV. Total Investment and Way of Cooperation

Total investment: RMB 300 million Yuan. Way of cooperation: sole investment, joint venture or cooperation.

## V. Anticipation of Market and Analysis of Investment Return

After the project is completed and put into operation, it is estimated that annual comprehensive profit will be RMB 50 million Yuan.

## VI. Contact Information

Contact Person: Zhang Yangang

Telephone: 029-33572718





## I. Project Name

### New Energy Auto Components Industrial Park Project of Weinan Economic Technologies Development Zone



## II. Project Implementation Agency

Administrative Committee of Weinan Economic Technologies Development Zone

## III. Project Description

Having a covered area of 1000 mu and relying on 100,000 electric commercial vehicles of Nanjing Golden dragon Bus Co., Ltd., the project is mainly to introduce the matched manufacturing enterprises involving automotive axle, cold-rolled steel plate, hot-rolled steel plate, molds, stamping parts, tyres, wheel rims, automotive interior and exterior, transmission shafts and charging piles and etc.

## IV. Total Investment and Way of Cooperation

Total investment of the project is RMB 5 billion Yuan. Investment promotion is adopted.

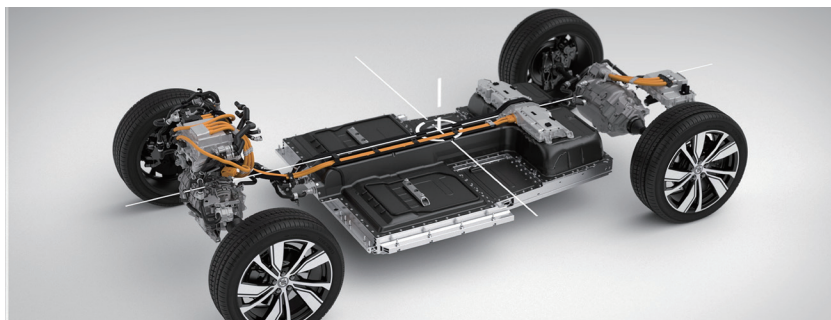
## V. Anticipation of Market and Analysis of Investment Return

After the project is completed, it will promote the automation and localization of the production of automobile components of local area, further improve and extend the automobile industrial chain, meeting the matched demand of enterprises in the area and realizing matched production for enterprises at home and abroad. It is estimated that the production value of RMB 20 billion Yuan will be realized.

## VI. Contact Information

**Contact Person:** Lei Xiqin

**Telephone:** 0913-8157777



## I. Project Name

### Basic Automobile Charging Facilities Project of Weinan Economic Technologies Development Zone



## II. Project Implementation Agency

Administrative Committee of Weinan Economic Technologies Development Zone

## III. Project Description

The project, having a covered area of 30000m2, is mainly to build: parking positions with charging piles, rooms for management, workshop for machinery repair, car wash shed, electromechanical room, supermarket, monitoring system, power supply system and other matched facilities.

## IV. Total Investment and Way of Cooperation

Total investment is RMB 500 million Yuan. Investment promotion is adopted.

## V. Anticipation of Market and Analysis of Investment Return

The project belongs to a new-type urban infrastructure. The construction of the infrastructure is a guarantee to develop new energy automobile industry. It has important meaning to stabilize the growth and adjust the structure. The project has a broad market development prospect.

## VI. Contact Information

**Contact Person:** Pan Mingbo

**Telephone:** 0913-2386169



## I. Project Name

# Construction Project of Agricultural Machinery Market of Baishui County



## II. Project Implementation Agency

Bureau of Agriculture and Rural Affairs of Baishui County

## III. Project Description

The project is planned to build the largest agricultural machinery distribution center with a covered area of 100 mu and the business area of 50,000m<sup>2</sup>.

## IV. Total Investment and Way of Cooperation

Total investment of the project is RMB 50 million Yuan. Cooperation or sole investment is acceptable.

## V. Anticipation of Market and Analysis of Investment Return

After the project is completed, it is estimated that annual income will be RMB 300 million Yuan and annual profit and tax RMB 15 million Yuan. The whole investment will be recovered within 4 years.

## VI. Contact Information

**Contact Person:** Bai Zhurong

**Telephone:** 0913-6155606

**Address:** West Section, Dongfeng Road, Baishui County

**Postal Code:** 715600

**E-mail:** 2395333011@qq.com



## I. Project Name

# 3000 t/y Poly- p- Phenylene Terephthamide (PPTA) Fiber Project of Yushen Industrial Zone



## II. Project Implementation Agency

Investment Promotion Bureau of Yushen Industrial Zone

## III. Project Description

PPTA is a kind of new-type high-tech synthetic fiber, featuring extra high strength, extra high modulus, high temperature resistance and light weight and etc. and it is widely used in bullet-proof vest, fire protection suit, cores of optical fiber cable and other fields.

## IV. Total Investment and Way of Cooperation

Total investment of the project is estimated to be RMB 500 million Yuan. Way of cooperation: sole investment.

## V. Anticipation of Market and Analysis of Investment Return

PPTA features in high strength, high modulus and antifiaming. PPTA may be discovered at strength optical fiber, bulletproof armor, asbestos substituent, composite material and personal protective equipments and it is an important basic raw material in such fields of aviation, information technology, national defense and automobile industry. It has a broad market prospect. The investment profit rate is estimated to be 25%.

## VI. Contact Information

**Contact Person:** Mi Haidong

**Telephone:** 0912-8497233

**Address:** Qingshui Industrial Park, Yushen Industrial Zone, Yulin City, Shaanxi Province

**E-mail:** 37213468@qq.com



## I. Project Name

# Deep Processing Project of 200,000 t/y Aluminum-Magnesium Alloy in Fugu County



## II. Project Implementation Agency

Administrative Committee of Qingshuichuan Industrial Park of Fugu County

## III. Project Description

The Deep Processing Project of 200,000 t/y Aluminum-Magnesium Alloy has a covered area of about 600 mu. Aluminum-magnesium alloy features in light weight (only 2/3 of aluminum alloy), low density, high strength and good shield of electromagnetic wave, good thermal diffusivity and good vibration absorption. It is widely used in aviation, traffic and transportation, machine-building and electronics, instruments and it is mainly used in the manufacturing of top-grade home appliances such as wall-hanging TV set shell, outer shell of notebook PC, communication electronics products, and automobile components. The products manufactured by this material may be recovered to reuse in 100%. It conforms to the environmental protection concept. At present the growth speed of aluminum-magnesium alloy consumption is far larger than that of steel, aluminum alloy, zinc, copper and etc. Only a few manufacturers are to develop aluminum-magnesium alloy. It is at the status that the supply does not meet the demand. The market development prospect is broad.

## IV. Total Investment and Way of Cooperation

Total investment of the project is RMB 2000 million Yuan. Sole investment or joint venture is acceptable.

## V. Anticipation of Market and Analysis of Investment Return

After the project is completed, annual sales income will be RMB 3.2 billion Yuan and annual profit and tax will be RMB 480 million Yuan. The investment recovery period is about 4.2 years.

## VI. Contact Information

**Contact Person:** Wang Yongfei

**Telephone:** 0912-8722919

**Fax:** 0912-8722919

**Address:** Comprehensive Service Center,  
Xiachuankou Industrial Park, Huangfu Town

**Postal Code:** 719405



## I. Project Name

# Deep Processing Project of Magnesium Alloy Automobile Components in Yulin High-Tech Industries Development Zone



## II. Project Implementation Agency

Investment Promotion Bureau of Yulin High-Tech Industries Development Zone

## III. Project Description

At present, the using of magnesium alloy of China lies at the start stage. Except Shanghai Volkswagen, other automobile manufacturers have no specific development plan in magnesium alloy manufacturing. The petroleum consumption per hundred kilometers of a vehicle of the developed country finally realized the target of 3 liters. Total consumption of magnesium used in automobiles of European countries occupies 14%. It will increase at a speed of 15-20%. Data shows that the growth rate of magnesium alloy in casting parts for automobiles has been maintaining at 15%. It is a highlight of the present and future industries. Dongfeng Motor Vehicles and Chang'an Vehicles of our country began to use magnesium alloy. Before long, Chongqing, Chengdu and etc have become the magnesium alloy research and development and application base of automobiles of our country. Therefore, promoting to use magnesium alloy products in an all-round way will be the important development orientation of new materials industry.

## IV. Total Investment and Way of Cooperation

Total investment of the project is RMB 97.5 million Yuan, including the fixed assets investment of RMB 60 million Yuan and circulating fund of RMB 37.5 million Yuan.

## V. Anticipation of Market and Analysis of Investment Return

After the project meets its production target, annual sales income will be RMB 80 million Yuan, profit RMB 15 million Yuan. The investment recovery period is 8-9 years (after the tax contribution, the construction period is 2 years). The internal rate of return of finance is 17% and the profit rate of investment is 22%.

## VI. Contact Information

**Contact Person:** Yang Ying

**Telephone:** 0912-2399659

13892268616





## I. Project Name

# 2000 Tons of Special Steel Production Line Project



## II. Project Implementation Agency

Administrative Committee of Hancheng Economic Technologies Development Zone

## III. Project Description

The project, having a covered area of 50mu, is planned to build an extra thin precision special micromaterial production line and its products belong to high-end and top-grade products. Such products are widely used in aviation, military weapons, instruments, communications, energy source, petrochemical industry, power station, fertilizer, ocean engineering, nuclear power, automobile vent pipe, special elastic components, fin and other fields. The thickness of the product is 0.05 mm and the width is 8-400 mm.

## IV. Total Investment and Way of Cooperation

Total investment: RMB 200 million Yuan.

Way of cooperation: sole investment, investment or cooperation.

## V. Contact Information

**Contact Person:** Xu Gaofeng

**Telephone:** 13110323889



## I. Project Name

# 200,000 t/y Pinion Steel Production Project



## II. Project Implementation Agency

Administrative Committee of Hancheng Economic Technologies Development Zone

## III. Project Description

Gear products belong to key basic parts of machinery industry. The drive components of most of complete machinery equipment belong to gear transmission. In recent years, the gear industry is developing quickly. The gear industry has become the leading industry of basic parts of China general machinery. With the stable economic growth of our country, the machinery manufacturing has been developing constantly. The top-grade gear steel for the manufacturing of automobiles and etc belongs to the key steel variety for key development. The pinion steel demand is increasing. It is not doubtful that it will inject strong promotion and vigor into pinion steel market. It has huge market in future and the development prospect is broad.

## IV. Total Investment and Way of Cooperation

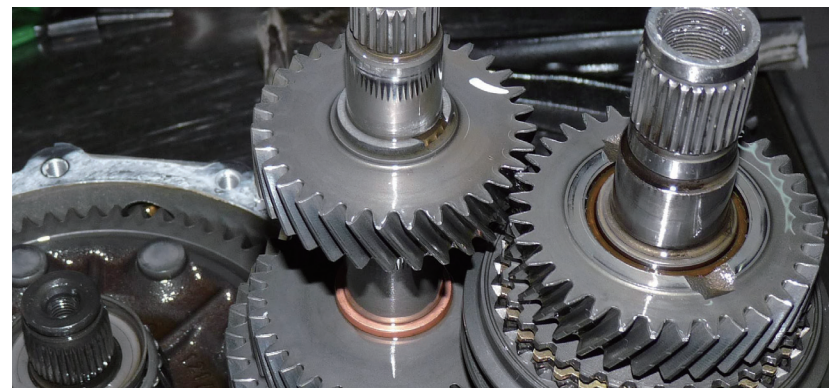
Total investment: RMB 200 million Yuan

Way of cooperation: sole investment or joint venture.

## V. Contact Information

**Contact Person:** Xu Gaofeng

**Telephone:** 13110323889



**I. Project Name****Automobile Components  
Industrialization Project****II. Project Implementation Agency**

Administrative Committee of Fufeng County Emerging Industrial Park Project

**III. Project Description**

The project is planned to be located in Fufeng Emerging Industrial Park, covering an area of 1,500 mu. With the help of the support group of Shaanxi Auto state-owned enterprises, the project will continue to build 10 standardized workshops, with a total construction area of 200,000 square meters, supporting office buildings, R & D buildings, etc., as well as 10 auto parts production lines, and purchase 100 sets of professional equipment (sets). The project attracts manufacturers of steering system, electronic and electrical appliances, brake system and other components, ambulance, cold chain vehicle production and R&D enterprises with market competitiveness and innovation and entrepreneurship ability, and heavy trunk auto parts enterprises to settle in the park so as to continuously expand and strengthen the auto parts industry while attracting downstream supporting suppliers to become an automobile parts industrial park integrating automobile parts suppliers.

**IV. Total Investment and Way of Cooperation**

Total investment of the project is RMB 3 billion Yuan. Joint venture or sole investment is acceptable.

**V. Anticipation of Market and Analysis of Investment Return**

It can realize the matched production capacity for 500,000 vehicles, annual sales income of RMB 5 billion Yuan, create profit and tax of RMB 150 million Yuan and create jobs for 500 persons. After the project is implemented effectively, it will realize sales income of over RMB 5 billion Yuan and provide jobs for over 500 persons.

**VI. Contact Information**

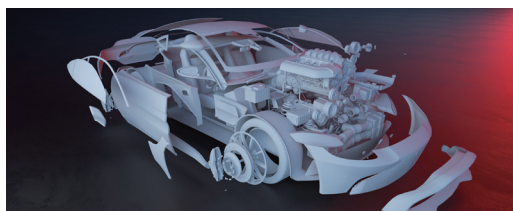
**Contact Person:** Guo Mingang

**Telephone:** 0917-5228019

**Fax:** 0917-5228019

**Postal Code:** 722200

**E-mail:** ffxxcyy@163.com

**I. Project Name****Electric Vehicles Production  
Project****II. Project Implementation Agency**

Administrative Committee of Fufeng County Emerging Industrial Park Project

**III. Project Description**

The project, having a covered area of 200 mu, is planned to build the production lines and supporting facilities involving electric automobile batteries, electric machines, electric control, electric vehicle chassis, entire electric vehicles, driving system of electric vehicles and battery recovery and etc. It will reach annual production capacity of 20000 electric vehicles. After the project is put into production, it will realize sales income of RMB 2.5 billion Yuan.

**IV. Total Investment and Way of Cooperation**

Total investment of the project is RMB one billion Yuan. An enterprise' self financing, sole investment or joint venture is acceptable.

**V. Anticipation of Market and Analysis of Investment Return**

Anticipation of market: the project belongs to an emerging industry of automobile industry and its market prospect is broad. It meets the national industrial policies, the planned requirements of the park and requirements for independent development. It possesses the conditions in process technique, construction, capital guarantee, environmental protection, fireproof, labor security, and etc. The project has considerable financial benefits. Seen from the investment analysis, the financial profitability of the project is stronger.

Analysis of Investment Return: after the project is completed and put into production, the total production value is estimated to be RMB 2.5 billion Yuan within 5 years and it will provide jobs for over 500 persons; after it is put into operation normally, the static investment recovery period is 2.21 years (before tax contribution).

**VI. Contact Information**

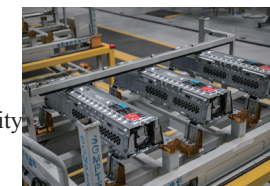
**Contact Person:** Guo Mingang

**Telephone:** 0917-5228019

**Address:** Chuangye Building of Fufeng County, Baoji City

**Postal Code:** 722209

**E-mail:** ffxxcyy@163.com



## I. Project Name

# Hybrid Electric Vehicle Battery Pack Project with Annual Output of One Million Sets



## II. Project Implementation Agency

Investment Promotion Bureau of Caijiapo Economic Technologies Development Zone

## III. Project Description

The project, with an area of 100 mu, integrates the R&D, design, production and sales of power battery system to form an annual production capacity of 1 million sets of HEV battery packs. The project mainly builds HEV battery pack production line and supporting facilities such as production, office and life assistance.

## IV. Total Investment and Way of Cooperation

Total investment of the project is one billion Yuan. Way of cooperation: cooperation, joint venture or sole investment.

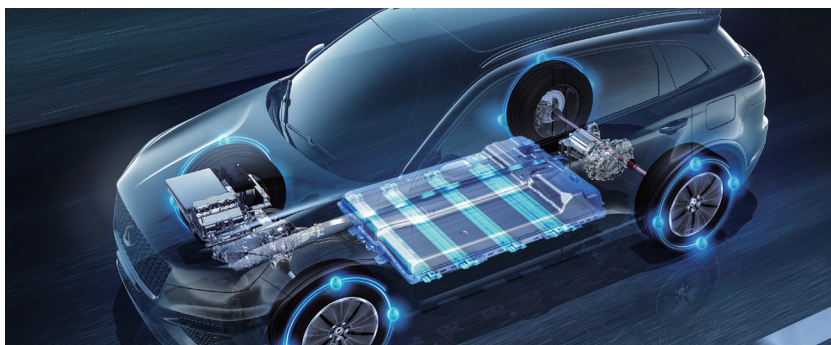
## V. Anticipation of Market and Analysis of Investment Return

Power battery pack is the core energy source of new energy vehicles. The power battery market develops rapidly with the extensive promotion of new energy vehicles. After completion, the project will greatly contribute to the improvement of NEV power battery industry level in Baoji, with an annual output value of RMB 2 billion and a total pre-tax profit of RMB 588 million Yuan.

## VI. Contact Information

**Contact Person:** Zhang Xiaoting

**Telephone:** 0917-8561517



## I. Project Name

# Production Line Project with Annual Output of 4500 Sets of Automobile Precision Mold



## II. Project Implementation Agency

Investment Promotion Bureau of Caijiapo Economic Technologies Development Zone

## III. Project Description

The project, with an area of 200 mu, is mainly to build a modern production workshop, raw material and finished products warehouses and supporting facilities of electric, water supply and heat supply system, office and matched life facilities. It is mainly to produce the precision molds for the production of automobile covering parts and structure parts, to produce the precision injecting molds for automobile interior and the precision molds for automobile gears and bearing production. The project is planned to form an annual production capacity of 2000 sets of precision stamping mold, 1500 sets of injection mold and 1000 sets of forging mold.

## IV. Total Investment and Way of Cooperation

Total investment of the project is RMB 530 million Yuan. Way of cooperation: cooperation, joint venture or sole investment.

## V. Anticipation of Market and Analysis of Investment Return

The level of automobile mold manufacturing is not only an important symbol to measure the level of automobile manufacturing industry, but also a basis to support the rapid development of automobile industry. The project will further expand the cluster of Baoji automobile manufacturing industry, and achieve annual output value of 720 million Yuan and total pre-tax profit of 130 million.

## VI. Contact Information

**Contact Person:** Lei Simeng

**Telephone:** 0917-8561517





## I. Project Name

**MEMS Sensor Manufacturing and Sensor Incubation**

**Industrial Park with Annual Output of 2 Million Pieces a Year**



## II. Project Implementation Agency

Weibin District Investment Promotion Bureau

## III. Project Description

This project, having a covered area of 250 mu, is mainly to build a modern high-end MEMS sensor materials, chip, packaging, testing production line and supporting production, office and life facilities. This project mainly aims at aviation, rail traffic, automobile, precision instrument, industrial automation, internet of things and energy sources, focusing on the research development, production and sales of high-end MEMS sensors. After the project is completed, it is planned to form a production capacity of 2 million a year.

## IV. Total Investment and Way of Cooperation

Total investment of the project is RMB one billion Yuan. Sole investment, joint venture or cooperation is acceptable.

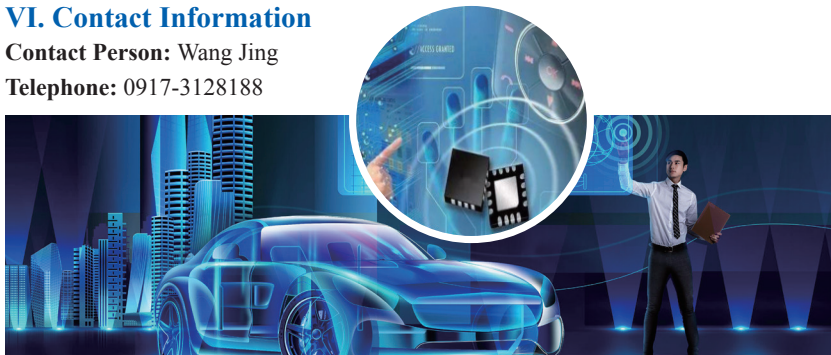
## V. Anticipation of Market and Analysis of Investment Return

This project may accelerate the development of electronic information and communication industry cluster towards high-end and integrated direction in Baoji City. It is of strategic significance to promote Baoji's level of sensor industry and build it as the China's Sensor Capital. After its completion, the annual output value will be RMB 2 billion and the total profit and tax will be RMB 770 million.

## VI. Contact Information

**Contact Person:** Wang Jing

**Telephone:** 0917-3128188



## I. Project Name

**500,000 PCS/Year Automobile**

**Components Project**



## II. Project Implementation Agency

Xunyang City High-Tech Industries Development Zone

## III. Project Description

Total investment of the project is estimated to be RMB 200 million in the first stage; the investment is RMB 200 million Yuan. It is to reorganize the assets of Xunyang Baoli Machine Co., Ltd., reconstruct its 3400 m<sup>2</sup> of standard workshops, and newly build 3 smart components productions with annual output of 500,000 pieces of automobile components, flange, and military equipment parts; In the 2nd stage, it relies on the technology innovation on casting parts of Hengtong Casting Company, the production capacity expanding of Baotong Auto Company. It is to improve the equipment manufacturing industrial chain gradually.

## IV. Total Investment and Way of Cooperation

The investment of the project is planned to be RMB 200 million Yuan and RMB 130 million Yuan is planned to be obtained through investment promotion. The joint venture is adopted.

## V. Anticipation of Market and Analysis of Investment Return

After the project is completed, annual production value will reach over RMB 300 million Yuan and profit and tax RMB 40 million Yuan.

## VI. Contact Information

**Contact Person:** Wang Dingji

**Telephone:** 15191565788



## I. Project Name

# Electric Vehicle Charging Equipment Construction Project of Zhenping County



## II. Project Implementation Agency

Zhenping County Housing and Urban and Rural Construction Bureau

## III. Project Description

The project is planned to newly build 13 charging stations, build the infrastructures involving office building, power distribution rooms, charging pillars, transformers, harmonic wave, low-voltage cabinets, monitoring system, matched charging pillar, symbol and green space.

## IV. Total Investment and Way of Cooperation

Total investment: RMB 200 million Yuan. Way of cooperation: investment promotion.

## V. Anticipation of Market and Analysis of Investment Return

It is estimated that annual business income will be RMB 120 million Yuan, profit RMB 36 million Yuan. The investment recovery period is 6 years.

## VI. Contact Information

**Contact Person:** Wang Xiuding

**Telephone:** 18809158806



## I. Project Name

# Large Power Charging Pillar Production Project for New Energy Auto of Shiquan County



## II. Project Implementation Agency

Administrative Committee of Shiquan County Industrial Centralized Area

## III. Project Description

It is intended to build 3 high-power (DC) charging pile automatic production lines and 1 charging interface adapter production line with an annual production capacity of 400,000 sets of charging piles, as well as high-power charging pile R&D center, charging pile operation and management platform, storage center and office area.

## IV. Total Investment and Way of Cooperation

Total investment: RMB 300 million Yuan. Way of cooperation: sole investment, joint venture or cooperation.

## V. Anticipation of Market and Analysis of Investment Return

After the project is completed, it will realize sales income of RMB 60 million Yuan and profit after tax contribution will be RMB 24 million. The project has huge economic benefits.

## VI. Contact Information

**Contact Person:** Mr. Liu

**Telephone:** 13891570168





## I. Project Name

# Construction Project of Scrapped Motor Vehicle Recovery and Disassembly Production Line



## II. Project Implementation Agency

Daxing Scrapped Motor Vehicle Recovery and Disassembly Co., Ltd. Of Baihe County

## III. Project Description

The Scrapped Motor Vehicle Recovery and Disassembly and renewable resources applied by the company is located at the Group I of Chuanping Community of Zhongchang Town. It has a planned investment of RMB 45 million Yuan and 16 mu of land has been requisitioned. It is planned to build 3000 m<sup>2</sup> of disassembly workshop, 1500 m<sup>2</sup> of office building, finished products warehouse, 4500 m<sup>2</sup> of interim vehicle area, purchase fine disassembly equipment, freon extraction equipment, oil and water separating equipments, cutting machines, faggoting press, forklift trucks, traction equipment, weighing equipment, hoisting equipment and etc. It will form the production capacity of 2100 various scrapped motor vehicles (including 600 passenger vehicles), meanwhile, it will recover the scrapped steel, scrapped nonferrous metal, waste plastics, tyre, rubber products, Freon and waste oil and etc after the disassembling of scrapped motor vehicles.

## IV. Total Investment and Way of Cooperation

Total investment of the project is RMB 45 million Yuan. It will be obtained through investment promotion. Way of cooperation: joint venture.

## V. Anticipation of Market and Analysis of Investment Return

The investment recovery period of the project is 3 years. After the project is completed and put into operation, it may provide jobs for over 60 persons and it will create benefits of over RMB 20 million Yuan directly or indirectly.

## VI. Contact Information

**Contact Person:** Cha Fangbo

**Telephone:** 138 9158 3888

**Address:** Kuanping Community, Zhongchang Town, Baihe County



## I. Project Name

# Automobile Matched Industrial Park Project



## II. Project Implementation Agency

Administrative Committee of Fuyan New Area

## III. Project Description

The project covers an area of about 500 mu. Around the Shaanxi Heavy Duty Automobile, Geely, BYD, Baoneng, Skywell and other complete vehicle enterprises supporting demand, relying on Grammer, Qianhai Smart, Sanqin, Huazhong Group, the project will speed up enterprise aggregation and extend the upstream and downstream industrial chain, build the Automobile Matched Industrial Park integrating research and development, production, sales and post market service of automobile components

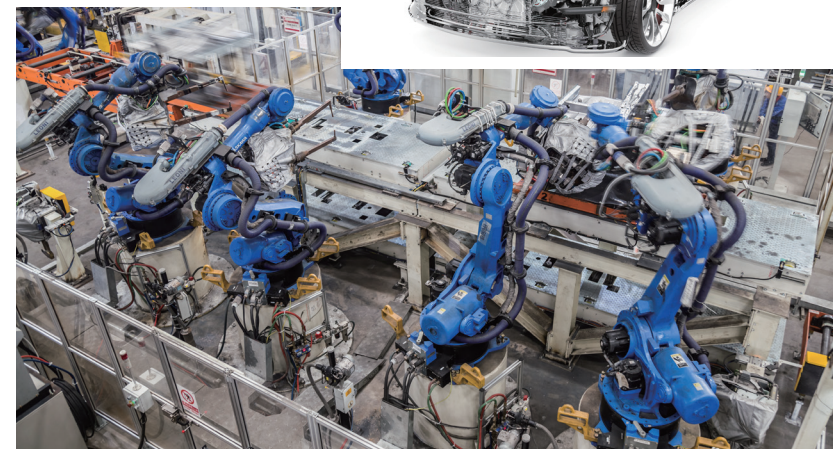
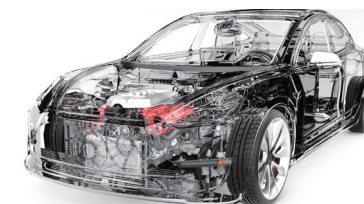
## IV. Total Investment and Way of Cooperation

Total investment of the project is about RMB 2 billion Yuan. Joint venture or sole investment is adopted.

## VI. Contact Information

**Contact Person:** Sun Tian

**Telephone:** 18710306174





## I. Project Name

# Digital Industrial Enclave Park Project of Tongchuan New District



## II. Project Implementation Agency

Development and Reform Bureau of Tongchuan New District

## III. Project Description

Digital Industrial Enclave Park Project of Tongchuan New District, having a covered area of 30 mu, is located in Xi'an High-Tech Industries Development Zone. It is mainly to build an enclave industry cluster center, introduce industries of big data, Internet of Things, information security, electronic sports and cartoon, health, E-commerce and etc. The project is planned to build a professional industrial park with the highest layer of digital economic industry, the largest industry cluster size and the most brand influential, co-funded by Tongchuan New District and the Administrative Committee of Tongchuan High-Tech Industries Development Zone.

## IV. Total Investment and Way of Cooperation

Total investment of the project is RMB 420 million Yuan. Joint venture or cooperation is acceptable.

## V. Anticipation of Market and Analysis of Investment Return

Through calculating, the internal rate of economic return is 13.59%, the net present value of the whole investment is RMB 40.9937 million Yuan. Seen from the internal rate of national economy, it is bigger than that of economic return rate of 8% of the basis.

## VI. Contact Information

**Contact Person:** Song Yue

**Telephone:** 0919-3182529

